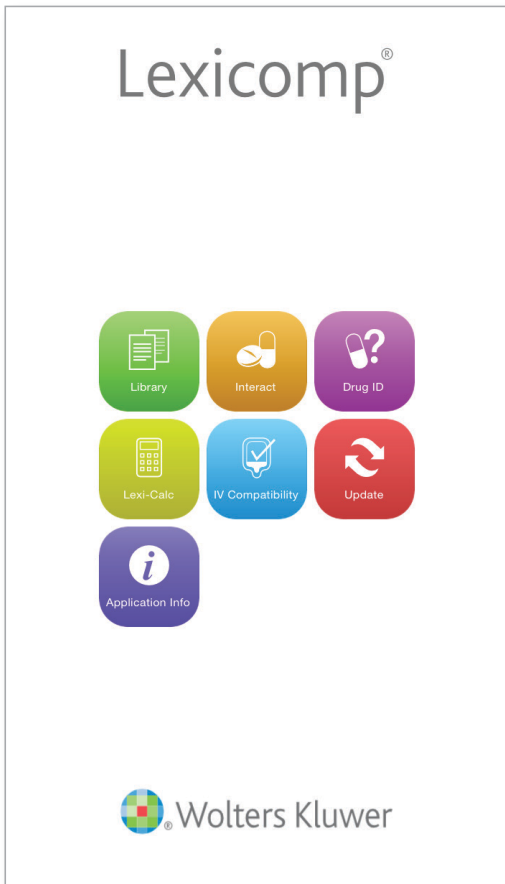


Clinical Drug Information

Lexicomp® Mobile Apps Quick Reference Guide

Tips for getting the most out of your drug information app

Lexicomp Mobile Apps from Wolters Kluwer Clinical Drug Information give healthcare professionals fast, on-the-go access to clear, concise and relevant drug and clinical information. Interactive tools and drug databases are available for the most popular smartphones and tablets, including iPad®, iPhone®, iPod touch®, and Android™ devices.



LIBRARY

Access all the informational databases included in your mobile subscription:

- Core drug monographs with information on dosing, warnings, potential adverse reactions, administration, and more
- Pediatric and neonatal drug information
- Medication patient education
- Dental reference databases



INTERACT

Analyze a patient's entire drug and natural product profile, identify potential interactions, and obtain patient management options.



DRUG ID

Identify loose or unlabeled medications by searching based on imprint(s), dosage form, color(s), and/or shape. Database includes images of more than 13,000 pills, tablets, and other dosage forms.



LEXI-CALC

Access more than 130 medical calculators designed to assist you with drug dosing, conversions, drip rate, organ function and more in both adult and pediatric patients.



IV COMPATIBILITY

Determine the compatibility and stability of IV drugs in a wide variety of solutions and combinations with this tool that incorporates content from Trissel's™ 2 Clinical Pharmaceuticals Database by Lawrence A. Trissel.



UPDATE

Update your databases to stay current with best practices and the timely, relevant clinical information.



APPLICATION INFO

Manage your display and navigation preferences and find fast information about your subscription.

Quick tips for using your drug information app:

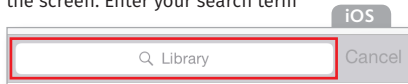
► Search for a drug or other topic:

Start searching fast, in just two taps!

- Choose the "LIBRARY" icon
- **Android users:** Select the magnifying glass icon at the top of the screen



iPad/iPhone users: Tap on the search bar at the top of the screen. Enter your search term



- **NOTE:** Android users can create a widget to jump straight to the search page

► Jump to a field in a drug monograph:

No more scrolling and searching – jump straight to the information you need!

- Open any monograph
- Smartphone users: hit the "JUMP" button in the upper right-hand corner; tablet users: select "SHOW FIELD LIST" in the upper right-hand corner



- Use the "ALPHA" tab to scroll through an alphabetical listing of monograph fields, or use the "MONO" tab to scroll through all the fields in the order they are presented in the monograph
- Tap on the field you want

► Navigate back to the home screen

When you're done with a search, quickly return home

- **Android users:** Tap the Lexicomp icon in the upper left of the screen and select the "HOME" icon



iPad/iPhone users: Tap the home or library icon in the bottom toolbar



- **NOTE:** iPad/iPhone users have a toolbar at the bottom of the screen with icons allowing you to jump to any module, including the library, from anywhere within the app

Lexicomp® Mobile Apps

Quick Reference Guide (continued)

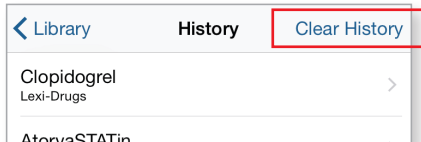
Return to recently viewed monographs

Browse a history of recently viewed monographs

- From the Home screen, choose the "LIBRARY" module
- Tap "HISTORY" to view a reverse chronological listing of recent monographs you have viewed
- Tap on any monograph title to open the monograph

Clear your history of recently viewed monographs

- Android users:** Tap the Lexicomp icon in the upper left of the screen; **iPad/iPhone users:** Tap the home or library icon in the bottom toolbar
- Choose the "LIBRARY" module
- Tap on "HISTORY" to view a reverse chronological listing of recent monographs you have viewed
- Tap on "CLEAR HISTORY" in the upper right-hand corner to clear your history



View your list of favorites

- Android users:** Tap the Lexicomp icon in the upper left of the screen; **iPad/iPhone users:** Tap the home or library icon in the bottom right of the screen
- Choose the "LIBRARY" module
- Tap on "FAVORITES" to view a reverse chronological listing of monographs you have selected as favorites

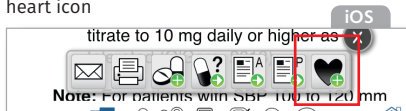
Add a monograph to your list of favorites

Keep a list of favorites for quick access

- Open any monograph
- Android users:** Tap the heart icon at the bottom of the screen



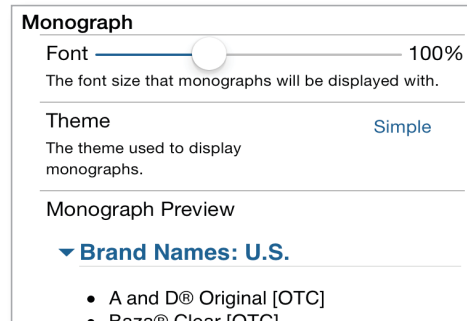
iPad/iPhone users: Tap the wrench icon at the bottom right to reveal a secondary toolbar including the heart icon



- The heart icon will include a plus sign to indicate that you are "adding" a favorite

Increase or decrease the size of text in your app

- Android users:** Tap the Lexicomp icon in the upper left of the screen; **iPad/iPhone users:** Tap the home or info icon in the bottom toolbar
- Choose "INFO" (Android) or "APPLICATION INFO" (iPad/iPhone)
- Select "PREFERENCES"
- Use the "FONT SIZE" slider under the "MONOGRAPH" header to adjust your font size from 50% to 200%



- Scroll down to the "MONOGRAPH PREVIEW" section to view how the font will appear

KEY TO THE NAVIGATION BAR

- Open any monograph and refer to the navigation bar at the bottom of the screen
- Tap the appropriate icon to quickly perform functions

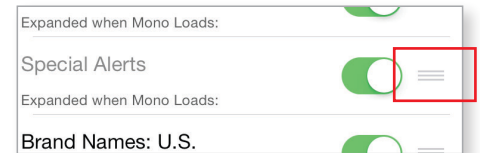
- Email the current monograph to a colleague or patient
- Print the current monograph
- Add the current drug to the Interact module
- Go to the Drug ID module
- Access adult patient education for the current drug
- Access pediatric patient education for the current drug
- Add or remove the current monograph from your list of favorites

NOTE: Not every function is available in every subscription. Some functions may not be available depending upon the databases you have downloaded.

Customize monograph views and fields order

Keep your favorite fields at the top of any monograph

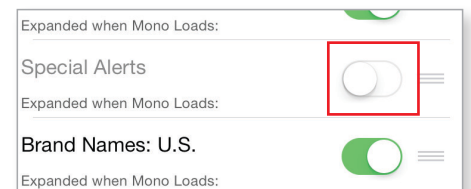
- Open any monograph
- Smartphone users: hit the "JUMP" button in the upper right-hand corner; tablet users: select "SHOW FIELD LIST" in the upper right-hand corner
- Select the "MONO" tab
- Hit the "EDIT" button
- Touch the triple line icon and drag and drop to move fields up and down within the monograph display



Set monograph fields to default as open or closed

Hide fields you rarely use to reduce monograph clutter

- Open any monograph
- Smartphone users: hit the "JUMP" button in the upper right-hand corner; tablet users: select "SHOW FIELD LIST" in the upper right-hand corner
- Select the "MONO" tab
- Hit the "EDIT" button
- Use the slider to the right of the field name to mark fields as ON (open) or OFF (closed), and they will default to that setting



Find a keyword within a monograph

- Open any monograph and select the magnifying glass icon to call up the monograph search bar
- Enter your search term in the text box and hit return on the keypad
- The monograph will jump to the first instance of your search term
- Use the "UP" and "DOWN" arrows to navigate to other instances of the search term
- Android users:** To leave the search bar, tap the checkmark icon in the upper left corner; **iPad/iPhone users:** To leave the search bar, tap the magnifying glass icon a second time.